



Throwing **Shade**

The doors opened on the Fifth Annual Kips Bay Decorator Show House in Palm Beach, FL, this past spring. The home at 3001 Spruce Ave. in West Palm Beach's Old Northwood Historic District was transformed with the creativity and talents of 24 of the country's top designers and architects.

These interiors showcase the realized dreams of the designers and architects come true. As the exclusive window treatment partner, The Shade Store worked with 21 of the celebrated interior designers to create the custom window treatments for their unique spaces.

MONKEY BUSINESS

Jim Dove envisioned a swanky space for predinner cocktails or that all-important nightcap. Despite the trend of interior spaces becoming multifunctional, Dove wanted to create a room that was dedicated to a singular activity and the appeal of a genuine cocktail bar remains strong and transcends tastes and times.

The color-saturated room is a tribute to New York's renowned and much-missed Monkey Bar, which welcomed sophisticates since it opened in the mid- to late 1930s in the Hotel Elysee. From the few historical records in existence, it wasn't until the early 1950s when the hand-painted murals of monkeys created by caricaturist Charlie Wala were added, along with the official name The Monkey Bar. From then on, the bar was the epitome of swanky until its untimely closure due to the pandemic.

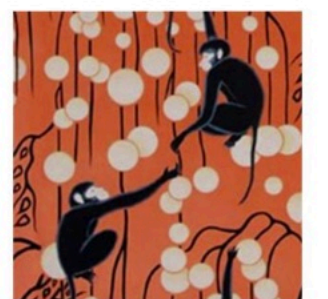
De Gournay's Deco Monkeys hand-painted wallpaper in a rich terra-cotta color lays the foundation for the space, which is dominated by a glowing waterfall bar crafted from Cristallo Sunshine quartzite from Primestones. A Kohler faceted Brinx bar sink and faucet add the finishing touch. Beneath the solid surface is bespoke cabinetry from Dove's workroom. The barstools are from Le Jeune Upholstery and are covered in Groves Bros' iconic Sally hand-screened cotton, reminiscent of classical Venetian textile design. The dramatic art deco Sillage chandelier is from Currey & Company.

Amplifying the importance of highly saturated color are the glowing orange silk taffeta pinch-pleat draperies crafted by The Shade Store and trimmed with Samuel & Sons taping. These long pours of orange bestow an expansive, romantic softness on the room. And the added organic accent of woven wood shades gives the design a decidedly tropical vibe.



Kitchens, bars and bathes designer Jim Dove draws inspiration from his passion for art and architecture. He has a reputation for his bespoke sophisticated design and has showrooms in both Short Hills, NJ, and Palm Beach, FL.

JimDoveDesign.com



De Gournay's Deco Monkeys hand-painted wallpaper



Orange silk taffeta pinch-pleat draperies from The Shade Store



Woven wood shades from The Shade Store